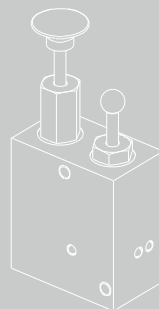


4.1

## SB4-L1X/28 series Hand pumps

SB4-L1X/28 hand pump is a hand pump for hydraulic brake release for various existing mobile equipment, which is generally used in series with hydraulic brake, and the mobile device can start to move after the brake is released.



### Contents

Overview .....	02
Specification .....	02
Hydraulic diagram .....	02
Ordering information .....	03

# SB4-L1X/28 Hand Pumps

## Overview

SB4-L1X/28 hand pump is a hand pump for hydraulic brake release for various existing mobile equipment, which is generally used in series with hydraulic brake, and the mobile device can start to move after the brake is released.

When the hand pump needs to be debraked, the operator must first press the stem to the farthest point of its stroke and then press down on the stem until the brake is engaged. If the hydraulic circuit is properly pressurized during or after manual braking, the stem of the hand pump will be bounced up by the high-pressure oil in the circuit, and the mobile device will resume normal operation, which effectively prevents the normal braking operation of the brake from being accidentally disabled.

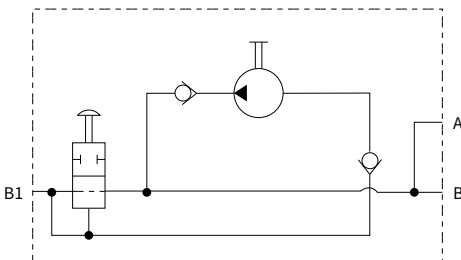
Compared with the current competitive products on the market, the SB4-L1X/28 hand pump has a simple structure, low manufacturing cost and good performance.

04

## Specifications

- The output flow rate per stroke is 1~2ml
- The maximum working pressure is 28MPa

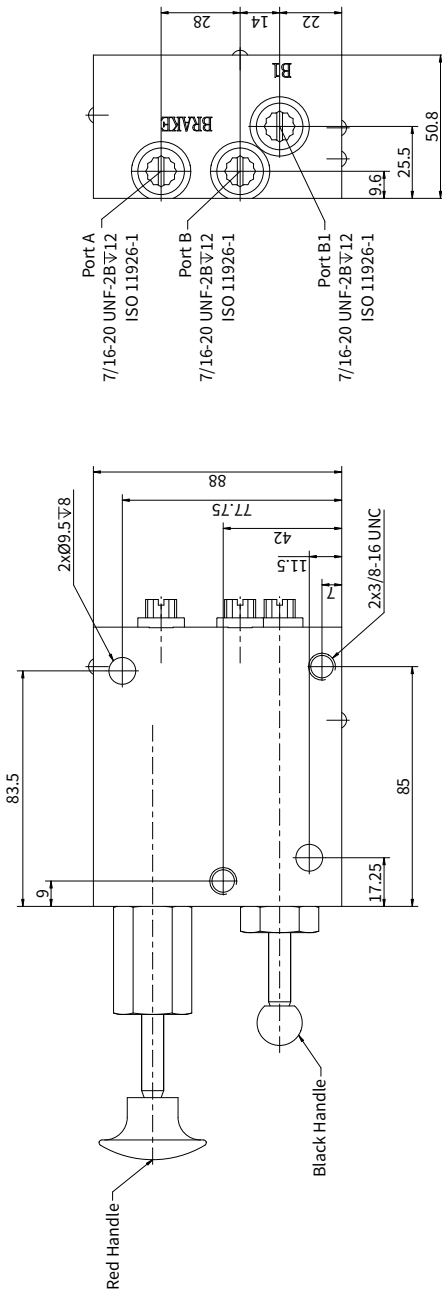
## Hydraulic diagram



P-0155

### Ordering information

Order Code: SB4-L1X/28



P-0156

