

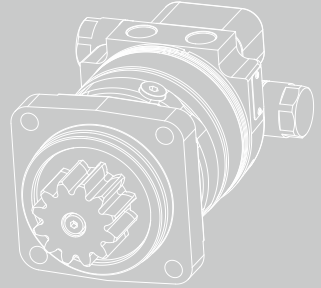
2.5


**Hengli**®

# HCL series

## Orbital hydraulic motor

HCL series orbital hydraulic motor is a kind of disc distribution cycloidal hydraulic motor, which adopts a special end face compensation structure, which can achieve high volumetric efficiency, high starting efficiency and good load retention under high pressure conditions.



### Contents

Overview .....	02
Advantages .....	02
Applications .....	02
Specification .....	02
Installation size .....	03
Length and weight .....	03
Allowable shaft load/bearing curve	04
Hydraulic diagram .....	05
Rotation direction .....	05
Ordering information .....	06



## Overview

HCL series orbital hydraulic motor is a kind of disc distribution cycloidal hydraulic motor, which adopts a special end face compensation structure, which can achieve high volumetric efficiency, high starting efficiency and good load retention under high pressure conditions, and is suitable for the rotary drive of mini excavators. The integrated relief valve group design can be selected to ensure the safety of the motor during use.

## Advantages

- Specially designed rotor with integrated internal flushing and self-lubrication function to improve the life.
- Double tapered roller bearing design to withstand high radial loads.
- High pressure face compensation disc to improve volumetric efficiency.
- Better load holding.
- Integrated gear spindle for easy installation and use.
- Compact back-cover design for integrated relief valves, fill-up port and other options.

## Applications

- Mast Aerial Work Platform
- Mini excavator
- Wood grabber machines

## Specification

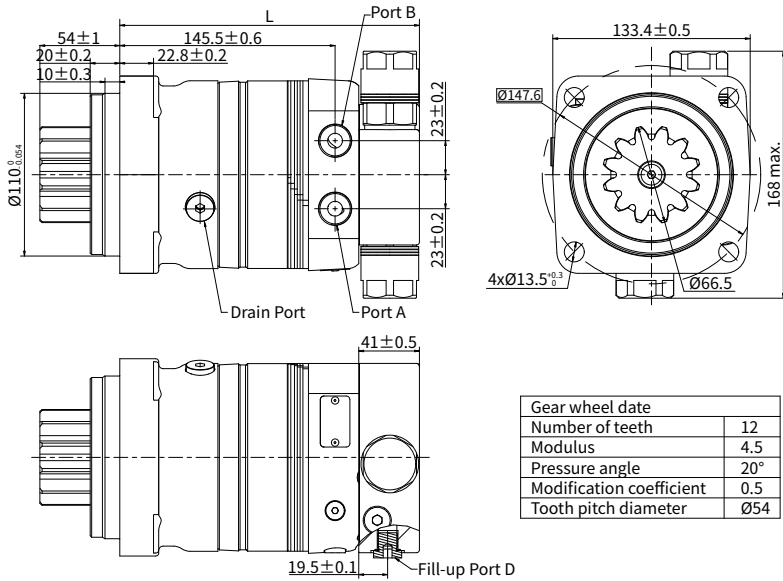
Type	HCL245
Displacement (cm <sup>3</sup> /rev.)	243.6
Max.speed (rpm)	80
Max.output torque (Nm)	510
Max.differential pressure (bar)	162
Weight (kg)	18.9

P-0097

- The filtration standard of ISO 4406 cleaning standard 20/18/15 is recommended.
- High quality anti-wear hydraulic fluids are recommended.
- When the temperature is 50° C, the minimum viscosity of the oil is recommended to be 20mm<sup>2</sup>/s.
- The recommended maximum operating temperature is 82°C .
- To assure best motor life, run motor 10-15 minutes in low speed high torque mode at approximately 50% of continuous pressure and 50% of continuous flow.
- The maximum pressure is the set pressure of the safety valve.
- External oil filling port is required (oil filling pressure 0.5-1Mpa).

## Installation size

Mount port: C01; Main shaft: G1



Gear wheel data	
Number of teeth	12
Modulus	4.5
Pressure angle	20°
Modification coefficient	0.5
Tooth pitch diameter	Ø54

P-0143

## Length and weight

Displacement cm <sup>3</sup> /rev.	L mm	Weight kg
245	202.5	18.9

T-0139

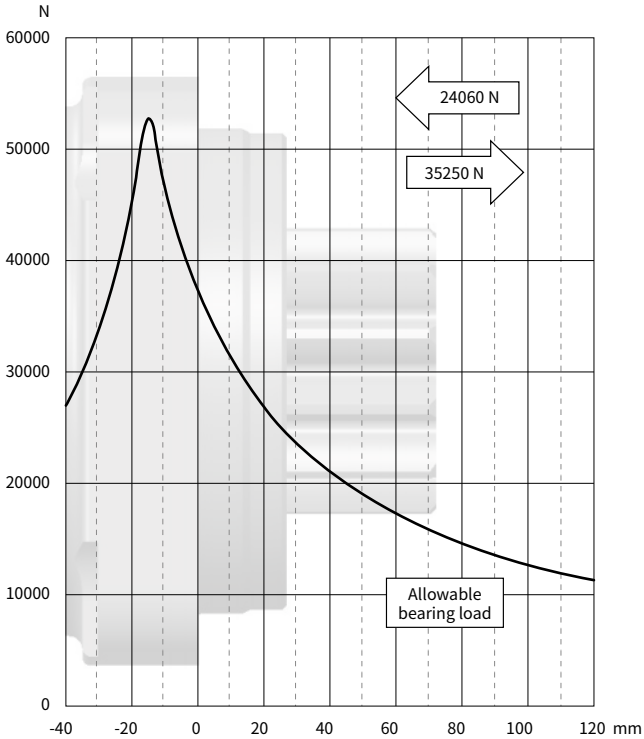
Note: Dimensions L are the length from the flange mounting surface to the rear end of the motor, and the tolerance is ±1mm.

## Allowable shaft load/bearing curve

As shown in the figure, when the axial load is 0, the radial allowable load of the output shaft is related to the distance from the flange mounting surface to the load action point.

The solid line shows the allowable radial load of the bearing. It is based on  $L_{10}$  bearing life 2000 hrs at 50 RPM with rated output torque.

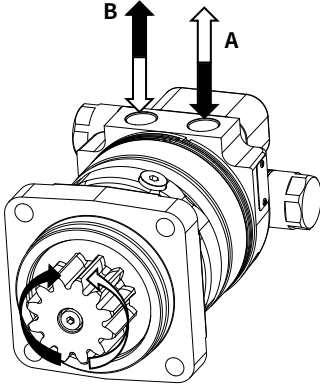
Any shaft load exceeding the values quoted in the curve will involve a risk of failure.



P-0144

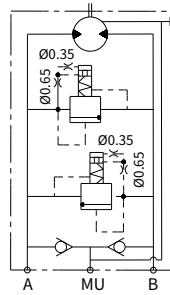
## Rotation direction: CW

When facing the motor shaft extension direction, port A is high pressure oil, the output shaft rotates CW; Otherwise, it rotates CCW.



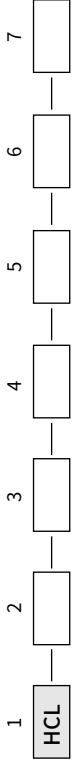
P-0146

## Hydraulic diagram



P-0145

### Ordering information



Pos.1	2	3	4	5	6	7
Series code	Displacement	Mount, Port	Output shaft	Rotation direction	Paint option	Special features
HCL	245	C01 4×φ13.5 Mount φ147.6, pilot φ110×10, Port G1/2, Drain Port G1/4	G1 12 tooth m4.5 gear shaft	A CW R CCW	N B C No Paint Black Hengli blue	A F V S Standard, integrated relief valve, with a relief pressure of 162 bar Free running High temperature Low temperature

T-0140

Note: When using the order information, the user can select the motor series, displacement, installation flange, port, shaft and other information. If the selected specification is not in the table or has special requirements, please contact us.

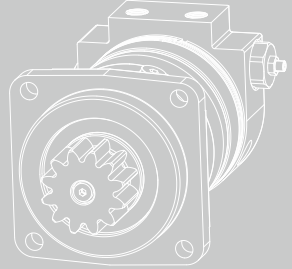
2.6



# HCLRB series

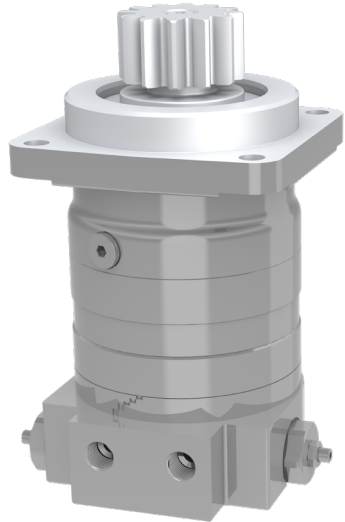
## Orbital hydraulic motor

HCLRB series orbital hydraulic motor is a kind of disc distribution cycloidal hydraulic motor, which adopts a special end face compensation structure, which can achieve high volumetric efficiency, high starting efficiency and good load retention under high pressure conditions.



### Contents

Overview .....	02
Advantages .....	02
Applications .....	02
Specification .....	02
Installation size .....	03
Length and weight .....	03
Allowable shaft load/bearing curve	04
Hydraulic diagram .....	05
Rotation direction .....	05
Ordering information .....	06



## Overview

HCLRB series orbital hydraulic motor is a kind of disc distribution cycloidal hydraulic motor, which adopts a special end face compensation structure, which can achieve high volumetric efficiency, high starting efficiency and good load retention under high pressure conditions, and is suitable for the rotary drive of mini excavators. The integrated relief valve group design can be selected to ensure the safety of the motor during use.

## Advantages

- Specially designed rotor with integrated internal flushing and self-lubrication function to improve the life.
- Double tapered roller bearing design to withstand high radial loads.
- High pressure face compensation disc to improve volumetric efficiency.
- Better load holding.
- Integrated gear spindle for easy installation and use.
- Compact back-cover design for integrated relief valves, fill-up port and other options .

## Applications

- Mast Aerial Work Platform
- Mini excavator
- Wood grabber machines

## Specification

Type	HCLRB195
Displacement (cm <sup>3</sup> /rev.)	198
Max.speed (rpm)	80
Max.output torque (Nm)	440
Max.differential pressure (bar)	147
Weight (kg)	20.2

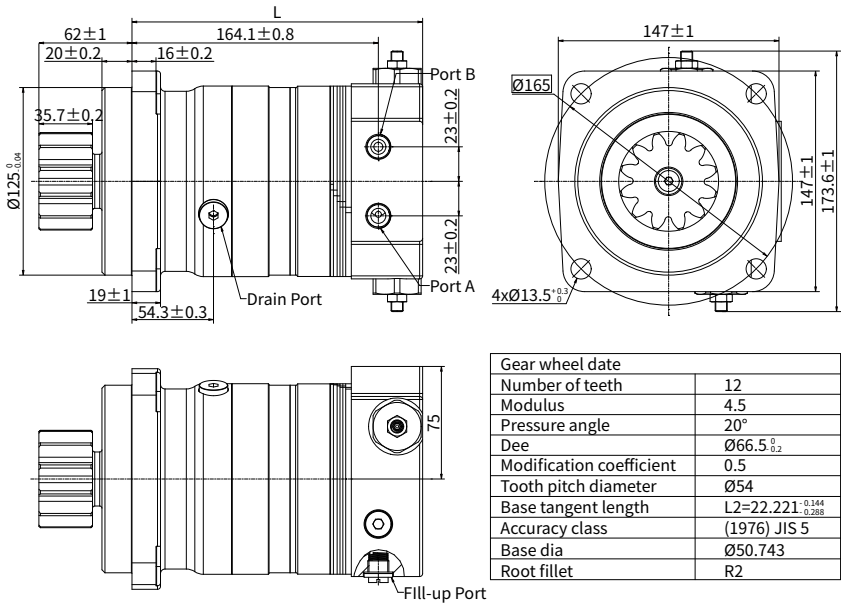
T-0172

- The filtration standard of ISO 4406 cleaning standard 20/18/15 is recommended.
- High quality anti-wear hydraulic fluids are recommended.
- When the temperature is 50° C, the minimum viscosity of the oil is recommended to be 20mm<sup>2</sup>/s.
- The recommended maximum operating temperature is 82°C .
- To assure best motor life, run motor 10-15 minutes in low speed high torque mode at approximately 50% of continuous pressure and 50% of continuous flow.
- The maximum pressure is the set pressure of the safety valve.
- External oil filling port is required (oil filling pressure 0.5-1Mpa).



## Installation size

Mount port: C05; Main shaft: G5



P-0196

## Length and weight

Displacement $\text{cm}^3/\text{rev.}$	L mm	Weight kg
195	193.6	20.2

T-0173

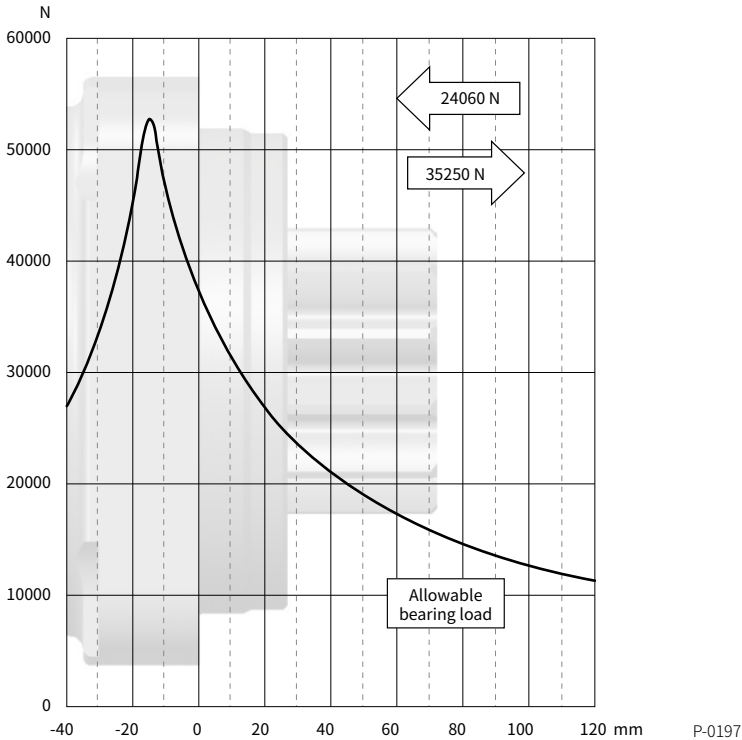
Note: Dimensions L are the length from the flange mounting surface to the rear end of the motor, and the tolerance is  $\pm 1\text{mm}$ .

## Allowable shaft load/bearing curve

As shown in the figure, when the axial load is 0, the radial allowable load of the output shaft is related to the distance from the flange mounting surface to the load action point.

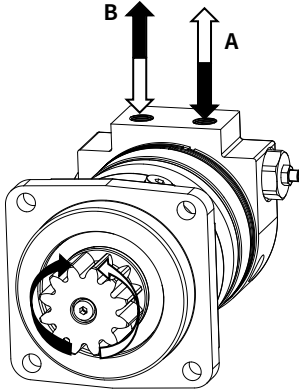
The solid line shows the allowable radial load of the bearing. It is based on  $L_{10}$  bearing life 2000 hrs at 50 RPM with rated output torque.

Any shaft load exceeding the values quoted in the curve will involve a risk of failure.



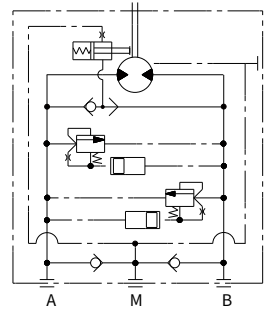
## Rotation direction: CW

When facing the motor shaft extension direction, port A is high pressure oil, the output shaft rotates CW; Otherwise, it rotates CCW.



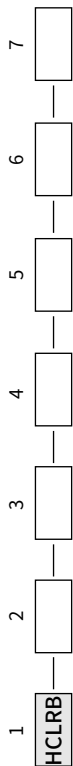
P-0199

## Hydraulic diagram



P-0198

## Ordering information



Pos.1	2	3	4	5	6	7
Series code	Displacement	Mount, Port	Output shaft	Rotation direction	Paint option	Special features
HCLRB	195	C05 4 × φ13.5 Mount φ165, pilot φ125 × 20, Port G3/8, Drain Port G1/4	G5 12 tooth m4.5 gear-shaft	A R CW CCW	N B C No Paint Black Hengli blue	A F V S J6 Standard Free running, High temperature Low temperature Integrated relief valve, with a relief pressure of 147 bar

T-0174

Note: When using the order information, the user can select the motor series, displacement, installation flange, port, shaft and other information. If the selected specification is not in the table or has special requirements, please contact us.