



1.2

EHD SERIES

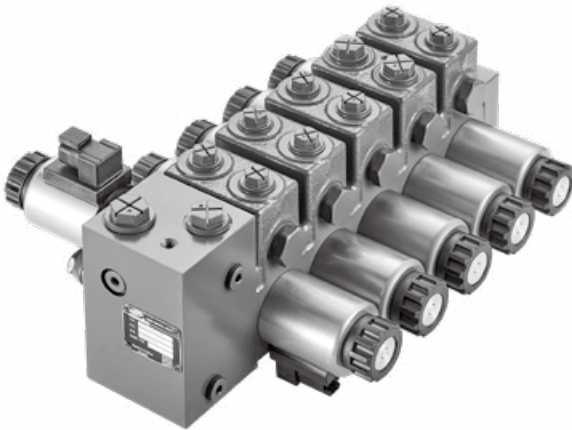
DIRECTIONAL VALVE WITH SOLENOID

EHD:

Nominal size	08
Rated pressure(bar)	310
Rated flow(L/min)	80

Benefits:

- High efficiency
- Less volume, lighter weight
- Low pressure drop,
less fuel consumption
- Fine controlling



01

Contents

	Page
Features	03
Section view	04
Technical data	05
Ordering code	06-07
Hydraulic diagram	08
Inlet section assembly	
· Inlet section assembly	09
· Inlet section assembly-with electrical proportional throttle valve	10
Middle section assembly	
· Middle section assembly	11
· Middle section assembly-with hydraulic lock	12
Endlet section assembly	13
Unit dimensions	14

Features

1. System:

- Open center, for fixed displacement pump
- Closed center, for load-sensing variable displacement pump
- Electrical switch and electrical proportional control

2. Structure

- Sandwich plate of design

3. Pressure

- Primary and secondary pressure relief valve
- LS pressure relief valve

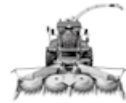
4. Applications



Corn combine harvester



Wheat combine



Ensilage harvester



Telescopic handler

Technical data

General

Structure	Stackable design		
Nominal size	08		
Type of connection	ISO 1179 / ISO6149		
Mass (kg)	Inlet element		4.2/6.3
	Middle section	General	2.8
		With hydraulic operated check valve	3.2
	End element		0.6/0.8

Hydraulic

Max. flow	Q (L/MIN)	80
Max. working pressure at port	P (bar)	310
	A/B (bar)	310

Electric

Electrical on/off or electrical proportional:

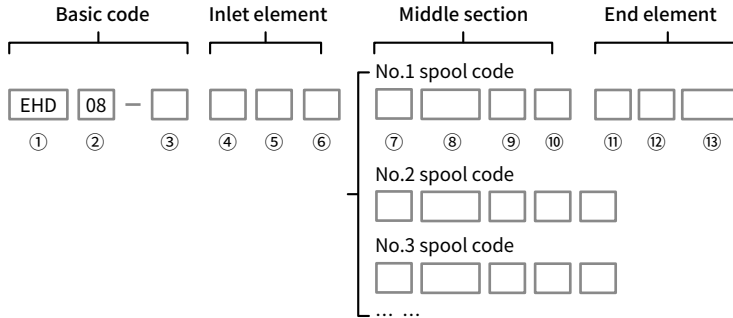
- Connection: Deutsch DT04-2P
- Protection class: IP69k
- Supply voltage: 12 or 24VDC

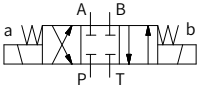
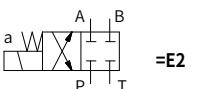
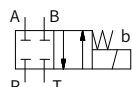
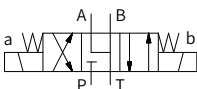
Using environment

Hydraulic fluid	Mineral oil (HL, HLP) according to DIN 51524. Other hydraulic fluids, such as HEES (Synthetic Ester) according to VDMA 24568.
Hydraulic fluid temperature range(°C)	-20 ~ +80
Viscosity range ν (mm ² /s)	10 ~ 380
Maximum permissible degree of contamination of the pressure fluid cleanliness class to ISO 4406 (C)	Class 20/18/15, we therefore recommend a filter with a minimum retention rate of $\beta_{10} \geq 75$

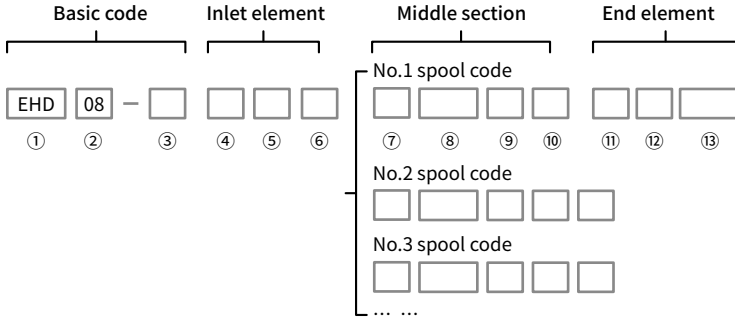
(For applications outside above mentioned parameters, please consult our sales dept.)

Ordering code



Basic code	① Structure	EHD	Stackable design
	② Nominal size		08
	③ Number of blocks	..	01~10
Inlet element	④ Main relief valve	Q	Without main pressure relief valve
		P...	With main pressure relief valve, (pressure in bar, 3-digits)
	⑤ LS relief valve	Q	Without LS pressure relief valve (LS relief valve plug)
		S...	With LS pressure relief valve (pressure in bar, 3-digits)
⑥ Electromagnetic unload	LZ	Without LS unload function	
	LA	With LS unload function	
Middle section	⑦ Spool symbol	E1	
		E2	
		E3	
		Q1	

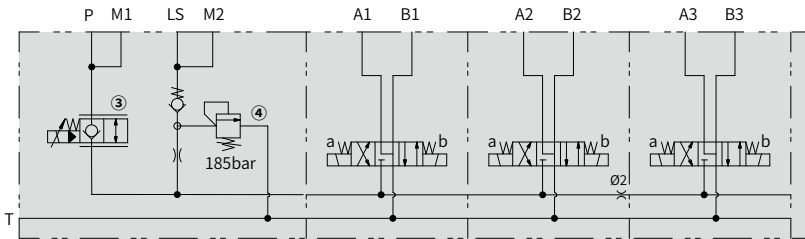
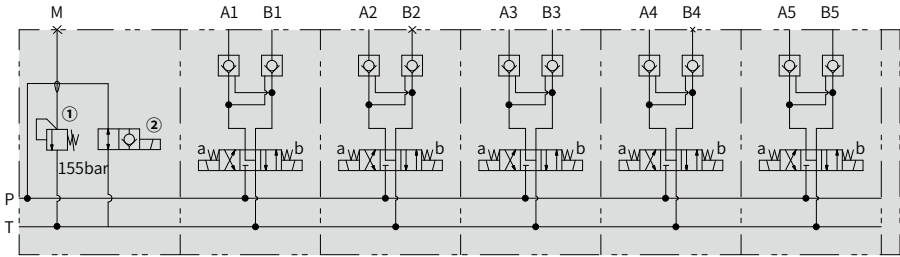
Ordering code



Middle section	⑦ Spool symbol	Q2	=Q2		
		Q3	=Q3		
	⑧ A/B flow	..—..	Flow in l/min, 2-digits, e.g. 50-50		
	⑩ AB hydraulic operated check valve	⑨ Operator type	W41	Electrical switch control, 24V	
W43			Electrical switch control, 12V		
OO			Without hydraulic operated check valve		
AB			The AB port has a hydraulic operated check valve		
Others	⑪ Sealing type	AO	Only A port has a hydraulic operated check valve		
		OB	Only B port has a hydraulic operated check valve		
		V	FKM		
Others	⑫ Design code	N	NBR		
		001			
*	⑬ Special Applications	No code	No special requirements	-450	Aluminum free material
		Other request	Further requirement in the clear text		

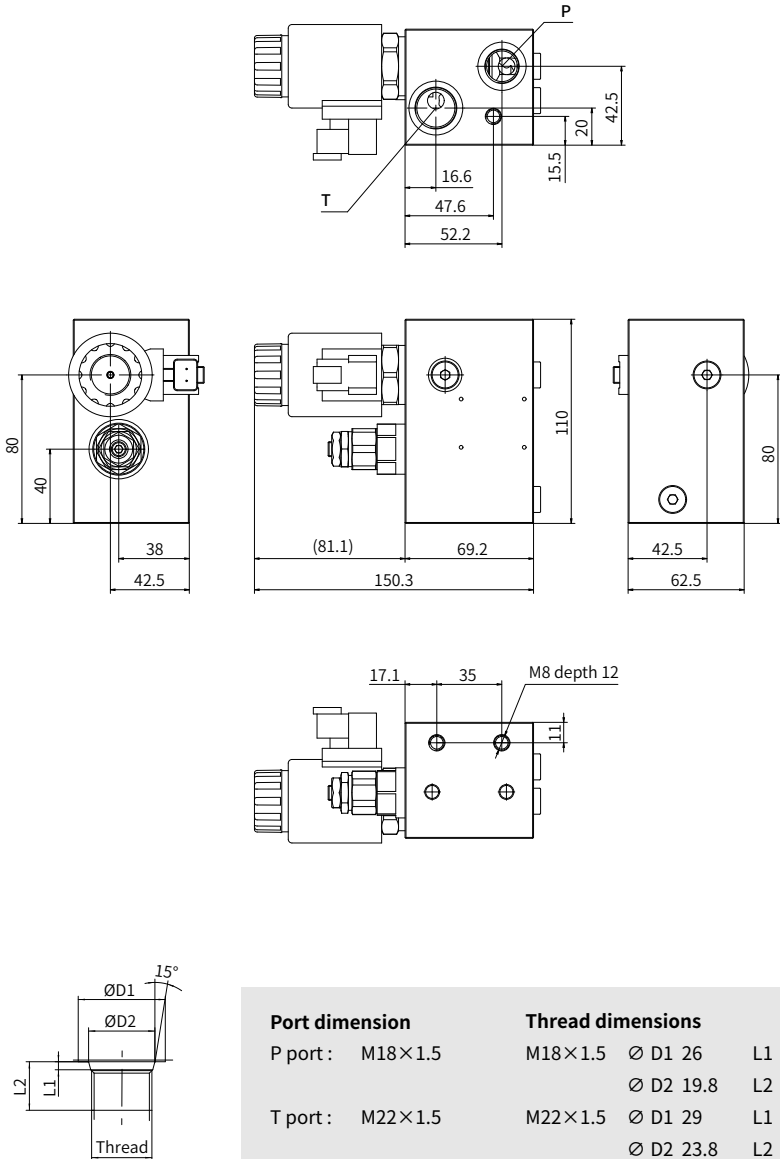
01

Hydraulic diagram



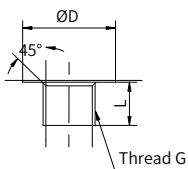
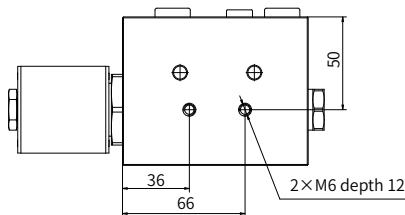
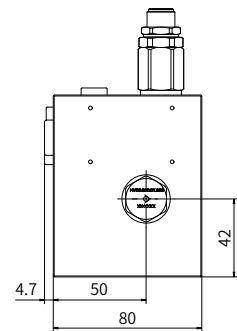
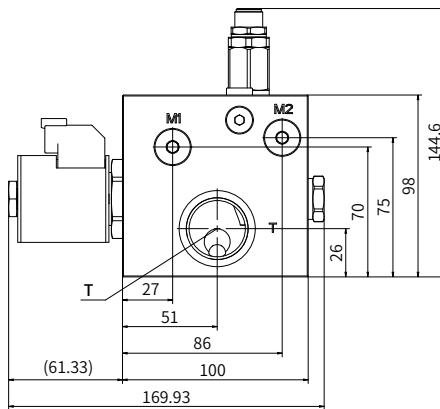
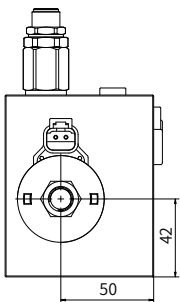
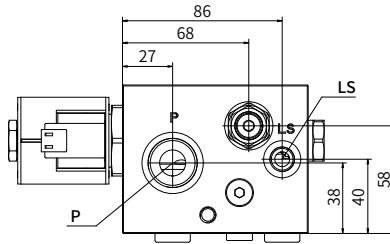
- ① Main relief valve
- ② Electromagnetic unload valve
- ③ Electrical proportional throttle valve
- ④ LS relief valve

Inlet section assembly



01

Inlet section assembly- with electrical proportional throttle valve



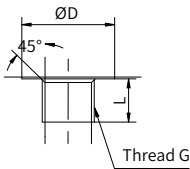
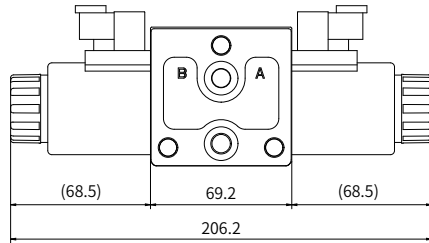
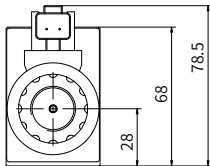
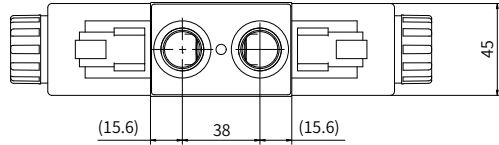
Port dimension

P port : G3/4
 T port : G1
 LS port : G1/4
 M port : G1/4

Thread dimensions

G3/4: Ø D 33 L 16.5
 G1: Ø D 41 L 19
 G1/4: Ø D 20 L 12.5

Middle section assembly



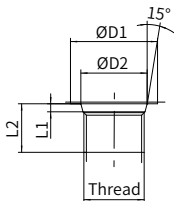
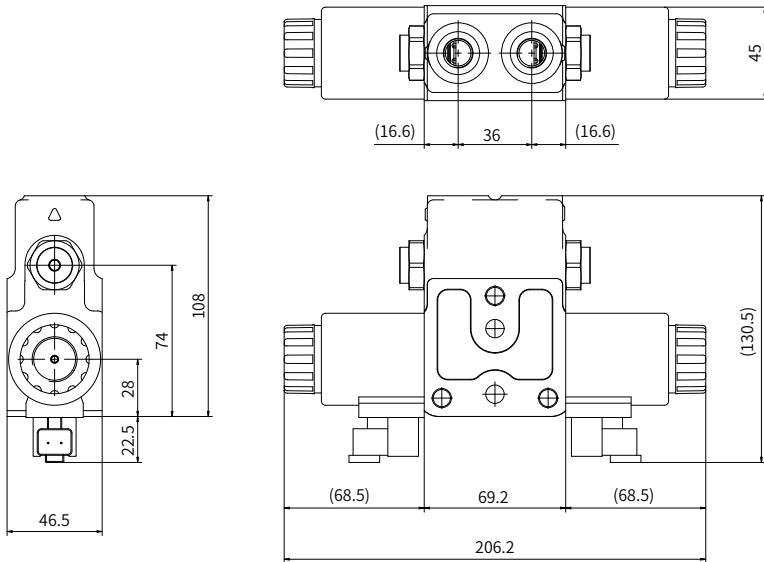
Port dimension

A/B port : G3/8
or G1/2

Thread dimensions

G3/8: $\varnothing D$ 23 L 12.5
G1/2: $\varnothing D$ 28 L 15

Middle section assembly-with hydraulic lock



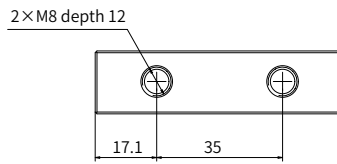
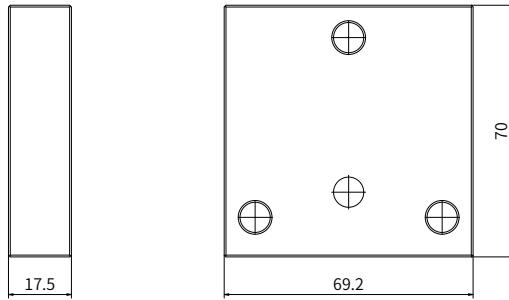
Port dimension

A/B port: M18×1.5
or M14×1.5

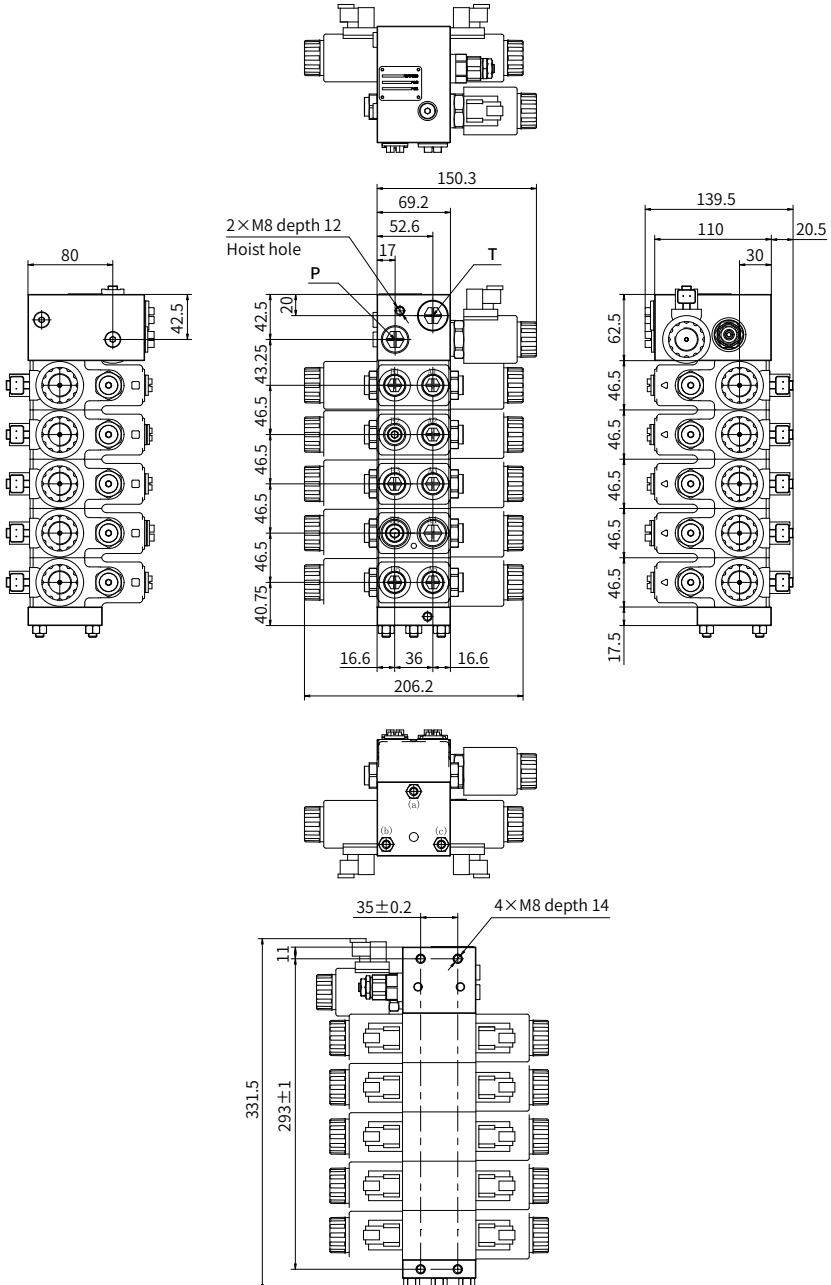
Thread dimensions

M18×1.5	Ø D1 26	L1 2.4
	Ø D2 19.8	L2 14.5
M14×1.5	Ø D1 21	L1 2.4
	Ø D2 15.8	L2 11.5

Endlet section assembly



Unit dimensions



China

+86 400 101 8889

America

+01 630 995 3674

Germany

+49 (30) 72088-0

Japan

+81 03 6809 1696



© This brochure can be reproduced, edited, reproduced or transmitted electronically without the authorization of Hengli Hydraulic Company. Due to the continuous development of the product, the information in this brochure is not specific to the specific conditions or applicability of the industry, thus, Hengli does not take any responsibility for any incomplete or inaccurate description.